

30 July 2025

**To Members of the Council**

Dear Sir/Madam

You are hereby summoned to a meeting of the  
**LOCAL ENVIRONMENT & CLIMATE COMMITTEE**  
(Cllrs: Woodhead, Boggis, Guilfoyle, Harvey, Morse, Hoyle & Macdonald)  
which will be held in the Greenwood Room in Hebden Bridge Town Hall on  
**TUESDAY 5 AUGUST 2025 at 7.30pm**



Emma Green  
Clerk to the Council

This meeting is open to the public unless Members decide to exclude the public for any exempt or confidential item of business.

#### **AGENDA**

- 1. TO ELECT A CHAIR AND DEPUTY CHAIR FOR THE LOCAL ENVIRONMENT & CLIMATE COMMITTEE FOR THE COUNCIL YEAR 2025-2026**
- 2. TO RECEIVE APOLOGIES FOR ABSENCE, REASONS AND ANY SUBSTITUTIONS**
- 3. TO RECEIVE MEMBERS' INTERESTS RELATING TO AGENDA ITEMS FOR THIS MEETING**
- 4. MINUTES OF THE MEETING HELD 30 APRIL 2025**  
To report on matters arising from the minutes of meeting held 30 April 2025 not itemised on this agenda.
- 5. ACTIVE TRAVEL**  
To receive a report on active travel, including cycle use in the Hebden Royd area, and to decide on actions as appropriate (enc)
- 6. TERMS OF REFERENCE**  
To review the Terms of Reference and to decide on actions as appropriate (enc).
- 7. COMMUNICATIONS**  
To receive communications and decide on actions as appropriate (enc).
  - a. CROWS Annual Report 2025
- 8. BUDGET UPDATE**  
To receive information on the current budget and to decide on actions as appropriate (enc)



**9. CALDERDALE ENERGY PARK**

To review the proposed survey following the decision made at Full Council (minute no 64) and decide on appropriate action (enc).

**10. HIGH HIRST WOODMEADOW**

To receive updates on the project and to decide on actions.

- a. Meadows Day (enc)
- b. FOHHWM agreement & management plan
- c. FOHHWM Proposal to line container (enc)

**11. ALLOTMENTS**

To receive information on the allotments and to decide on actions.

- a. Banksfield Tree works (enc)
- b. Draft Tenancy Agreement review
- c. HHA clarification regarding additional structures to sheds
- d. Allotment fee increase & water charges
- e. Allotment Workday Plan (enc)
- f. Play equipment and willow shelter from HHA
- g. Tenants Meeting update, held 9.7.25

**12. OTHER PROJECTS & UPDATES**

To receive updates and decide on actions.

- a. Dog waste bag holder installation & locations (enc)
- b. Loose Masonry Complaint on Fountain Street
- c. Calder Holme Parks Tennis Court
- d. Hanging Baskets
- e. Ginko Trees for peace

## HEBDEN ROYD TOWN COUNCIL

Meeting of the LOCAL ENVIRONMENT AND CLIMATE COMMITTEE  
Held WEDNESDAY, 30<sup>TH</sup> APRIL 2025

### MINUTES

**PRESENT:** Councillors: Woodhead (Chair), Guilfoyle, Harvey and Hedges

**HRTC Clerk:** E Green

**Minutes - HRTC Deputy Clerk:** E Andrews

**517. TO RECEIVE APOLOGIES FOR ABSENCE AND ANY SUBSTITUTIONS.**

Apologies were received from Cllrs Boggis and Morse.

**518. TO RECEIVE MEMBERS' INTERESTS RELATING TO AGENDA ITEMS FOR THIS MEETING.**

There were no members interests reported at this meeting.

**519. MINUTES OF THE MEETING HELD 11 MARCH 2025**

In relation to minute number 425, it was updated that the work to replace the graffiti boards in Calder Holmes Park will take place in early May.

**RESOLVED:** To note the information.

In relation to minute number 426, Cllr Morse continues to progress enquiries with Mytholmroyd Community Centre and Hebden Bridge Community Association in relation to electrical recycling points.

**RESOLVED:** To note the information.

**520. BUDGET UPDATE**

Information on the new budget was received.

**RESOLVED:** To note the information.

**521. STREET CLEANING IN HEBDEN BRIDGE**

An update in respect of a new Barrow Operative was received from the Clerk. The Operative will be starting in May, with equipment being stored at partner sites Hebden Bridge Picture House and Hope Chapel.

Operative costs to be covered by Calderdale Council.

**RESOLVED:** Cllrs. welcomed this information, and agreed a press release will be produced to follow.

**522. PROJECT UPDATES**

Updates were received on the following projects and actions decided:

a. High Hirst Woodmeadow

**RESOLVED:** Activities for Meadows Day in July along with associated communications will to be delivered.

b. Cycle Hangar

**RESOLVED:** Purchase has been agreed, delivery and installation to be completed by Calderdale Council in due course.

c. Hanging Baskets

Cllrs were made aware of the new online booking system, and the increase on basket costs of 50p per retailer basket and £1 per lamppost basket.

**RESOLVED:** Cost to businesses and organisations agreed to be the same as 23-24 (£55 per basket), to be reviewed again in 25-26.

**523.**

**APPOINTMENT OF LOCAL ENVIRONMENT & ALLOTMENTS OFFICER**

The Clerk reported that an Officer has been appointed, and is due to start on the 19<sup>th</sup> May. The following were discussed:

a. Induction Programme including key stakeholders.

b. Priorities – short and long term.

Cllrs discussed the priorities for action, Calderdale Energy Park was raised as as a potential area of interest for the Committee.

**RESOLVED:** In respect of a). key stakeholders were identified and a timeframe to meet the various partners will be outlined by the Clerk as part of onboarding process.

In respect of b). priorities were identified as follows: Allotments, dog waste bag holder installation, Meadows Day events, Calder Holmes tennis courts renovation, familiarisation with HRTC agreement with the Friends of High Hirst WoodMeadow and High Hirst Management Plan.

In respect of Calderdale Energy Park, this will be brought to Strategy and Review for further consideration.

The meeting finished at 9:00pm.

# Active Travel

## Hebden Royd cycle hangar survey: final report Summary

### Background

Having a secure and easily-accessible space in which to store bicycles at home has been identified as a key barrier in the UK to increasing the number of journeys made by bicycle. Perhaps unsurprisingly, this is likely to be a bigger issue affecting residents living in cities where residents are likely to live in smaller properties – often terraced houses without external garages or blocks of flats without adequate provision of cycling storage space. Indeed, on-street cycle hangars have become much more widespread in urban areas, most notably in London where it is estimated that there are over 4,700 hangars giving almost 40,000 secure cycle spaces to residents close to their own home.<sup>1</sup>

### What is a cycle hangar?

On-street cycle hangars, like those provided by companies such as Cyclehoop in London, are secure, weather-protected storage units designed to hold bicycles in residential areas. Typically, users living close by to the hangar pay a small yearly fee to store a bicycle in them (rather than storing or attempting to store a bicycle at home). They often hold around six bicycles and are placed on the edge of the road, taking up the space of a small car parking bay. They can only be accessed with a key and are constructed from robust materials – they are both secure and weather-resistant.



Figure 1. A cycle hangar in London (source: cyclehoop.com)

### Hebden Royd: a possible location for cycle hangars?

---

<sup>1</sup> <https://cleancitiescampaign.org/wp-content/uploads/2023/11/London-Secure-Cycle-Parking-Study-November-2023-final-reissue-161124.pdf>

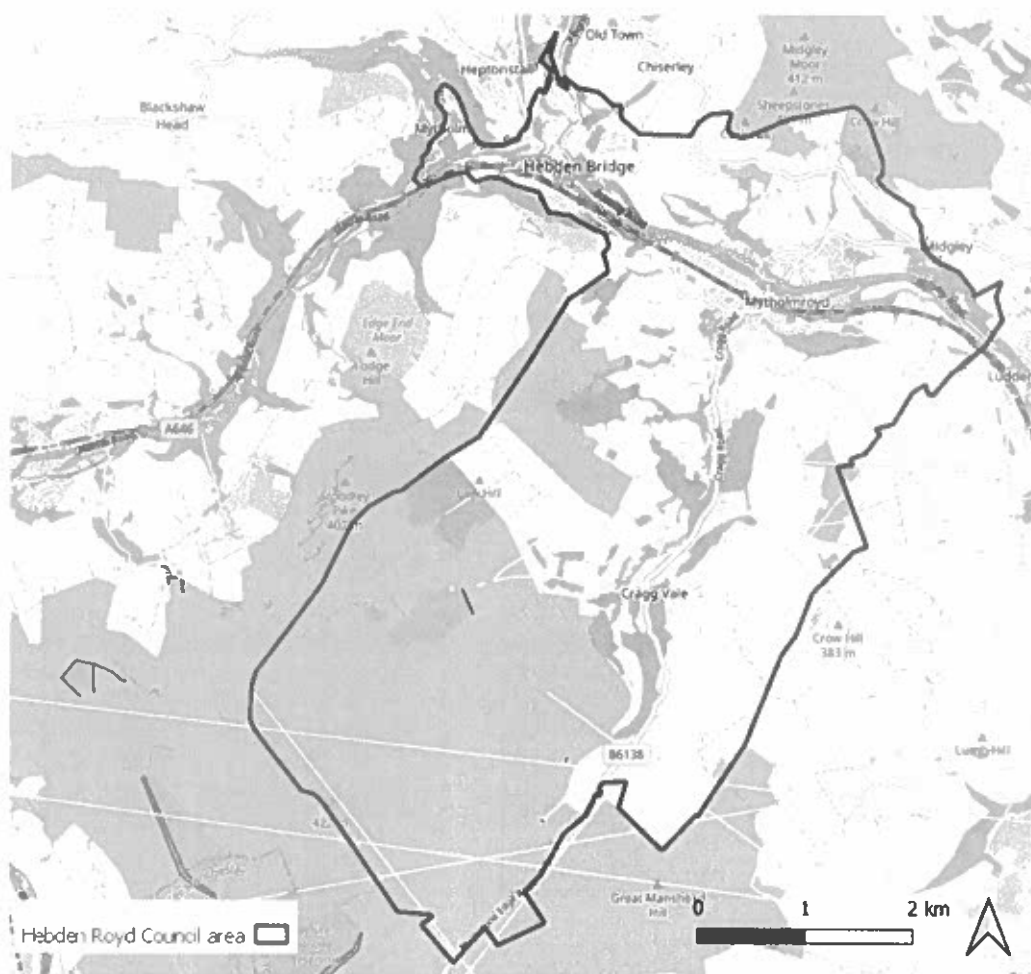


Figure 2. A map of Hebden Royd Council area

Hebden Royd, despite covering the small towns of Hebden Bridge and Mytholmroyd, and the villages of Cragg Vale and Mytholm, has housing characteristics that are more similar to larger urban centres. The steep topography has restricted, particularly in Hebden Bridge, the extent of any suburban expansion. Instead, many homes are on tightly-packed streets of terraced housing (with 'back-to-back' or 'over-' and 'under-dwellings' common). There are several reasons that this compact area is suitable for the provision of cycle hangars:

- There is limited private storage space for bicycles. Most residents do not have large gardens with sheds or garages and there is a general lack sufficient indoor or outdoor space.
- Despite the topography and the lack of cycling infrastructure – both barriers to cycling – travelling by bicycle is a convenient and efficient way to travel within the valley itself, particularly between Hebden Bridge and Mytholmroyd, but also beyond to Todmorden and Sowerby Bridge along the canal.
- The compact nature of Hebden Bridge and the reasonably well-connected nature of the valley by public transport means that, despite being semi-rural, over 25% of residents in Hebden Royd do not own a car. The proportion in the town centres of Hebden Bridge and Mytholmroyd are significantly higher than this – as high as 54% in one part of Mytholmroyd and 47% in a part of central Hebden Bridge.

None of this means that there are not challenges with providing on-street cycle hangars in the area. Some of the other barriers to cycling are outlined in this report, but include the weather, safety

amongst other road users and the hilly topography. In addition, just as there is limited space for cycle storage in the home, there is some conflict surrounding on-street parking of cars, particularly in Hebden Bridge where tourists arriving by car add to the levels of parking demand. However, aside from the importance of prioritising sustainable transport, this report shows that there are many residents who would support the replacement of a parking space for one car on their street with a cycle hangar to hold six bicycles.

## Study aims

During April-May 2024, Hebden Royd Town Council administered an online survey, using Google Forms, to understand, in the local area, with several key aims:

- Gaining a clear understanding of current travel behaviour and people's preferences for different modes of travel.
- Identifying the key barriers to travelling by bicycle or owning a bicycle in Hebden Royd.
- Understanding the extent to which people have problems securely storing bicycles at home and whether this impacts on bicycle use or ownership.
- Gaining a deeper insight into the specific issues people face in securely storing and access their bicycles.
- Quantifying how much or little support there is for the installation of cycle hangars across residential streets in Hebden Royd.
- Understanding how this support varies by demographics and location.
- Exploring the key reasons in Hebden Royd why people support or oppose the installation of cycle hangars.
- Identifying the extent to which there is support to remove a car parking space to implement a cycle hangar.
- Understanding whether, if a cycle hangar were installed on their street, respondents would be likely to sign up.
- Understanding how much people would be willing to pay to access a cycle hangar.
- Identifying possible future locations for future cycle hangars in Hebden Royd.

## Research questions

- To what extent does the local population identify that they lack adequate space to store bicycles in their home?
- To what extent is inadequate storage space identified as a barrier to bicycle ownership and bicycle use?
- How does this compare to other issues (e.g. topography, weather, safety, cost)?
- To what extent is there support for the installation of cycle hangars across residential streets in Hebden Royd? Does this vary by respondent demographics and location?
- To what extent is there support for installing cycle hangars at the expense of car parking spaces in Hebden Royd?
- Would some residents use a cycle hangar if it was installed on their street and they had access?
- How much would people be willing to pay in a yearly fee for access to a cycle hangar?

## Executive summary

This report aims to understand the issues residents in Hebden Royd face with bicycle storage, the extent to which lack of storage restricts bicycle ownership and use, and whether residents would support and utilise cycle hangars as a possible solution to bicycle storage issues. The following bullet points give a brief description of the findings in this report:

- **There is significant unmet demand for cycling in the area:** while more than 60% of respondents cycle, some 26% (N=43) indicated that they would like to cycle but currently do not do so.
- **There is a widespread issue with cycle storage:** 62% (N=79) of respondents had some issues storing a bicycle in their home, with key problems being a general lack of space, steep stairs and basements and having to leave bicycles outdoors in poor weather where they are at risk of theft.
- **Cycle storage issues inhibit bicycle ownership:** the second most common barrier to bicycle ownership was lack of storage. 36% (N=13) of respondents who did not own a bicycle reported that access/storage issues was a reason for non-ownership.
- **Cycle storage issues inhibit bicycle use:** even amongst respondents that find innovative (or unsuitable) ways to store their bicycle at home, inadequate storage and poor access impacts on how often they use their bicycle. A quarter (N=32) of respondents reported that access and storage issues at home were important factors limiting bicycle use.
- **There is clear evidence of support for cycle hangar installation in Hebden Royd:** 78% (N=128) support the installation of bicycle hangars in the wider Hebden Royd area.
- **Most respondents support cycle hangar installation on their own street, even if it means removing a car parking space:** two thirds (67%, N=110) of respondents would support this compared to 23% (N=38) who would be opposed.
- **Support is generally a little higher in Mytholmroyd (77%, N=56) than Hebden Bridge (57%, N=38)** reflecting higher levels of concern around removing car parking spaces in Hebden Bridge.
- Amongst those who do not support cycle hangar installation on their street, key concerns were removal of car parking space, the risk of vandalism/theft, the aesthetics of the hangars and that they would not be well used in that location.
- The reports finds **clear evidence of demand for cycle hangar installations:** more than half of respondents (52%, N=85) would be either very likely or likely to sign up to use a cycle hangar.
- **The preferred yearly subscription cost is £20-30.**
- Planning of future cycle hangar locations needs to give careful consideration to the size of the population within a short walk, the topography and surface of the street, road space constraints, the safety of users and road users, existing storage options and parking tensions.



6



## **LOCAL ENVIRONMENT & CLIMATE COMMITTEE TERMS OF REFERENCE**

- Membership:** 7 Councillors and Ex-officio
- Non-councillor:** Not applicable to this committee
- Quorum:** Three Town Councillors with voting rights
- Meetings:** Four meetings per year (or as required)

### **1. Introduction**

1.1 The aim of this Committee is to enhance and protect the local environment and promote climate awareness and action within the Town Council's boundaries, working with the community and partners to build a greener, more sustainable town.

1.2 The Committee is to:

- I. Promote sustainable living and reduce the environmental impact of the Town Council's activities.
- II. Encourage local action on climate change, biodiversity and nature recovery. Oversee local environmental initiatives, including green infrastructure, tree planting, and waste reduction.
- III. Engage and support local groups working on environmental and climate-related projects.
- IV. Champion education and awareness campaigns around environmental protection and climate resilience.

### **2. Membership**

2.1 The Local Environment & Climate Committee shall consist of seven Town Councillors, to be elected annually at the first meeting following the Annual Meeting of the Town Council.

2.2 The Mayor is Ex-Officio on this Committee

2.3 Three members of the Committee shall constitute a quorum.

2.4 The Chair and Vice-Chair are to be elected annually at the first meeting of this Committee (following the Annual Meeting of the Town Council) and shall hold office for the council year.

2.5 In the event of the resignation, disqualification, or death of a Councillor during the year any vacancy on the Local Environment & Allotments Committee will be filled at the next meeting of the Full Council.

2.6 Substitutions are permitted in the event of a member's absence from a meeting of the Local Environment & Allotments Committee. The member unable to attend must arrange their own substitution and notify the clerk by 5pm on the day of the meeting.

### **3. Meetings**

3.1 Four scheduled meetings per year, other meeting may be called if required to consider urgent issues.

3.2 Public notice of meetings shall be given in accordance with Schedule 12, Paragraph 10(2) of the Local Government Act 1972.

### **4. Documentation**

4.1 Minutes of all meetings will be recorded by an officer of the Council and circulated for information at Full Council meetings.

4.2 Reports, documents and correspondence relating to this Committee are available to Full Council on request.

4.3 All correspondence shall be conducted through the Town Clerk.

### **5. Scope**

5.1 To decide and incur expenditure within budget on environmental improvement projects, including green spaces which encourage the prosperity and positive promotion of the area. Campaigns and education projects related to climate awareness and sustainability. Biodiversity and nature recovery initiatives at High Hirst Woodmeadow and across Hebden Royd.

5.2 To advise the Council on matters relating to environmental and climate issues including, but not limited to: Renewable energy use and energy efficiency in

Council buildings and operations, recycling schemes and circular economy initiatives, nature conservation, pollution reduction and green travel.

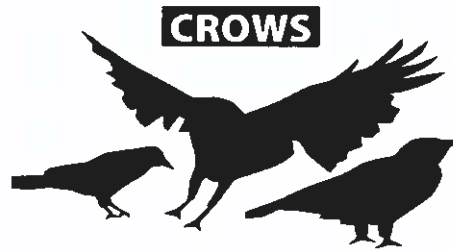
- 5.3 To work with local environmental groups, community organisations, and statutory bodies to identify, plan and support initiatives that address local environmental and climate priorities.
- 5.4 To support the Council's commitments to reduce carbon emissions and become a more sustainable and resilient community.
- 5.5 To explore opportunities for grant funding and partnerships that align with the aims of the Committee.
- 5.6 To lead on tree management and planting initiatives within the Town Council's remit, and liaise with relevant authorities on tree protection and management matters.
- 5.7 To represent the Town Council in consultations relating to climate, biodiversity, local nature plans and the management of green spaces.
- 5.8 To ensure risk management and Health & Safety systems are in place for areas under the Committee's control.
- 5.9 To work with partners and stakeholders on sustainable travel and access projects (e.g. cycle infrastructure, walking routes, electric vehicle charging).
- 5.10 To encourage public involvement and consultation in environmental planning and climate action.
- 5.11 To develop and support the delivery of media communication regarding local environment and climate on behalf of the Council.

## **6. Review**

- 6.1 The Local Environment & Climate Committee's Terms of Reference are to be reviewed annually at the first meeting of the Committee following the Annual Meeting of the Town Council, or in response to changes in legislation or Council policy.

# Community Rights of Way Service

7.a



## 2024 – 2025 review

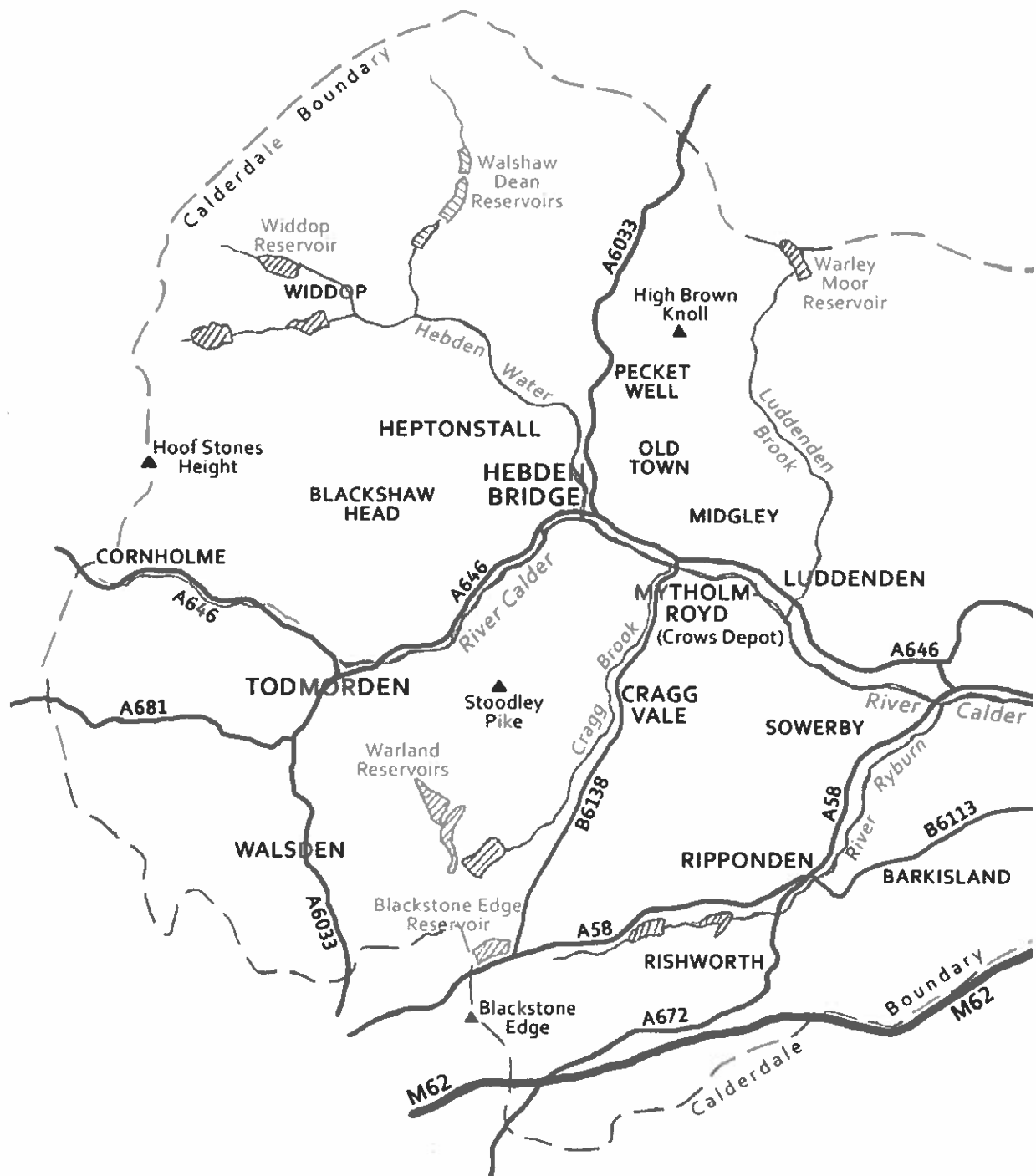
### Some highlights of the year

Most of our work involved jobs that had been reported by the general public, but we also worked on some long term projects: e.g.

- A bridge was installed to create a safe route over a large area of very wet peat bog on the causey path between Gaddings Dam and Warland Reservoir.
- The Todmorden Moor Geology Trail upgrades were completed and this fascinating walk is now re-published on [Heart of the Pennines website](#).
- We completed the repair of steps, bridges and the crumbling edges on the popular Hebden Bridge riverside paths around Foster Dam.
- The ancient stone packhorse bridge at Blackshaw Head was rebuilt for future generations to enjoy.
- The Walking routes around Luddenden Valley produced by the Luddenden Conservation Society have been waymarked, repaired and improved.
- All the stone steps were cleared and several new wooden steps were installed on the path from Heptonstall down to Midgehole. There is more to do, but we are well on the way.
- The paths around the Dodd Naze estate in Hebden Bridge were rescued from encroaching vegetation with a local plan for their continued upkeep.
- Two new bridges were installed over the Colden (below Egypt) and over Ramsden Clough, above Walsden.
- Six new finger-posts were installed across the area.
- The popular riverside path at Ripponden was refurbished.

**Over a thousand days were worked by volunteers.** We have continued working three days a week in nearly all weathers.

# Where we worked





*Uncovering causey stones in Cragg Vale.*



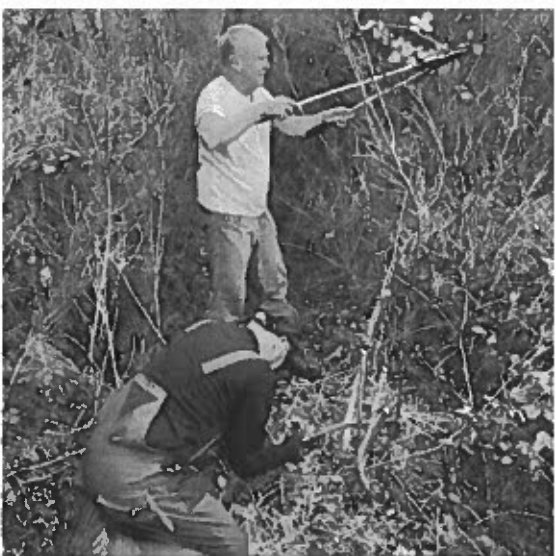
*Removing a fallen tree near Hebden Bridge.*



*Getting down to it in Wadsworth.*



*A new bridge in Colden.*



*Opening a new path in Luddenden.*



*Drainage work on a causey path at Whirlaw.*



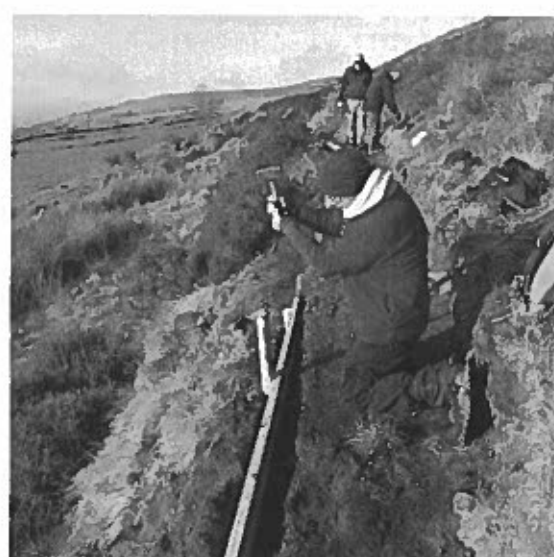
*Sorting a flooded path on the Pennine Way.*



*Restored packhorse bridge at Blackshaw Head.*



*Scraping the Ripponden riverside path.*



*Securing a path edge at Midgley.*

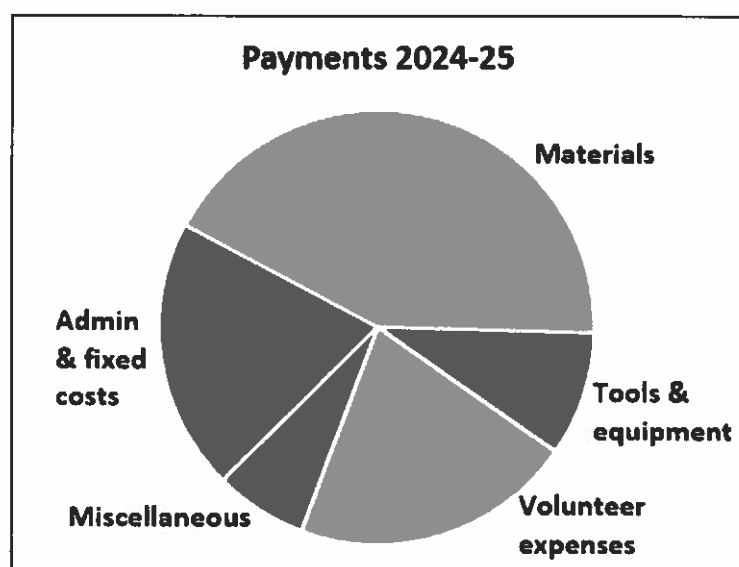
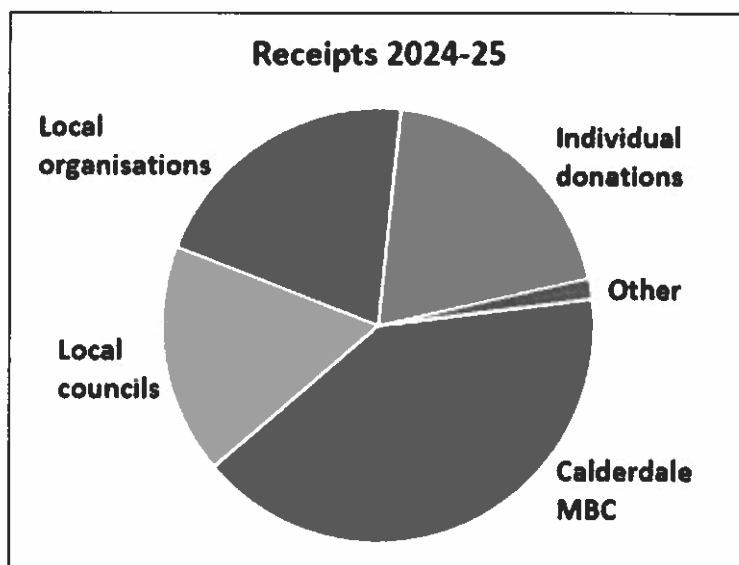


*New steps at Foster Dam, Hebden Bridge.*



*A new finger-post at Blackshaw Head.*

## Funding and Finance



Our funding group developed our funding policy. We aim not to be over reliant on public funds and last year we feel that we achieved a good balance.

- **Local councils** again generously supported our work.
- **Individual donations** increased, with a significant number of people opting to use [Just Giving](#).
- We had more donations from **local community groups and user groups**.
- We received several donations from the '**legacies**' of **local path users**.



# Thanks

We try to respond to funders and donors as best we can, but we would like to take the opportunity to thank everyone for their financial support last year:

12th Halifax Sea Scouts	Midgley Village Shop
Blackshaw Parish Council	Natural England (Pennine Way & Pennine Bridleway)
Blackshaw Head Fell Race	Old Town Post Office Shop
Calder Valley Fell Runners	Ramble Worldwide Outdoor Trust
Calderdale Council Highways	Ripponden Parish Council
Calderdale Long Distance Walkers	Ripponden Ward Forum
Calderdale Ramblers	Sowerby Residents
Cornholme Wreath Makers	Todmorden Harriers
Fox & Goose customers	Todmorden Town Council
Friends of Calderdale Countryside	Todmorden Wind Farm (through CFFC)
Friends of Nutclough	Todwalkers
Hebden Royd Town Council	Top Brink customers
HEC contractors (Mytholmroyd)	Upper Stoodley Residents Association
Heptonstall Fell Race	Wadsworth Parish Council
Heptonstall Parish Council	Wadsworth Walking Market
Luddendenfoot Ward Forum	
Midgley Community Forum	

And the many people who gave us anonymous donations either directly or through Just Giving.

## Thanks for in-kind help

We rely on local businesses and individuals to sustain our work, in particular:

- Mountain Wild for flying the CROWS flag and donating Tech-Wash so we stay cleaner. Sue's support for CROWS will be sadly missed.
- CALVAG for always delivering wherever and whenever we need them.
- Ian Clarkson for dealing with fallen trees - often at short notice.
- Calderdale Council Highways for support, advice and guidance.
- Amy Gault from SPLAT for helping us to keep ourselves safe.
- Ian Whitehead at Calder Computers who keeps our IT systems going and helps us when something goes wrong.
- Angela Wright for the meticulous checking of our accounts.
- Dylan Wilby and Graham Ramsden for helping us with our social media.
- The Dusty Miller, Mytholmroyd, for hosting our meetings.
- Keith Devine for designing several new waymarks.
- Pennine Signs for printing waymarks for us at short notice.
- Steve Blacksmith, for help with our environmental audit and review.
- Andrew Barker for assisting with getting timber and tools to a remote work site on Langfield Common.
- Rosie at Natural Endings for helping us develop 'Collections in Memory'.
- Everyone who took the time to make reports to our website.
- All the landowners who have allowed us to work on their land and provided advice, practical help and funding.

## Publicity

- [Our website](#) has been upgraded and is updated regularly. About 5,000 users visited the site during the year.
- [Our Blog](#) forms a unique public record of our work and was visited over 500 times a month during the year.
- [Our Facebook page](#) now has 3600 regular followers, with posts also shared with 30 local and recreational groups.
- We produced a new promotional leaflet to publicise our work and to hand out at events.

## Improving the way we are organised

We all joined CROWS to improve rights-of-way, but to do that we need an infrastructure to support the work. To be sustainable, we have continued to share the organisational workload.

This year:

- We recruited five new volunteers and our waiting list is reducing.
- The Ryburn team was reformed and expanded. We have set up a sub-depot in Ripponden which, thanks to Ward Forum funding, has helped us to increase the amount of work we can do in the Ryburn area.
- We carried out a complete review of our first aid equipment and procedures.
- Our new treasurer has streamlined our financial systems.
- As a small part of minimising our environmental impact, we introduced battery-powered brush cutters.
- Following our achieving charitable status, we agreed to implement new policies recommended by the Charity Commission on dealing with complaints and organisational risks.

## Plans for 2025 - 26

- We will complete the refurbishment and waymarking of the Ripponden riverside path.
- We will expand our work in the Ryburn and Luddenden areas.
- With Calderdale Highways, we will improve waymarking of paths leading off public roadsides.
- We will develop a response to requests from friends and families who wish to donate to CROWS in memory of a loved one.
- We will continue responding to reports of encroaching vegetation, muddy paths, unclear waymarking, dodgy stiles, broken gates, sagging boardwalks and rotting revetments - the list goes on!

## Local Environment & Climate 2025-26

Expenditure	Description	BUDGET 25/26	ACTUAL 25/26	EXPECTED 2025/26	TOTAL 25/26	BUDGET 24/25	ACTUAL 24/25	BUDGET 23/24	ACTUAL 23/24	BUDGET 22/23	ACTUAL 22/23
<b>LAND &amp; BIODIVERSITY</b>											
Meadows Day		£ 800.00	£ 466.59	£ -	£ 466.59	£ -	£ -	£ 600.00	£ 548.98	£ 5,600.00	£ 11,823.23
Scything & Haymaking		£ 1,500.00	£ 160.00	£ -	£ 160.00	£ -	£ -	£ 1,100.00	£ 1,000.00	£ -	£ -
Power Scythe		£ 1,100.00	£ -	£ -	£ -	£ -	£ -	£ -	£ -	£ -	£ -
Friends of High Hirst		£ 150.00	£ 130.00	£ -	£ 130.00	£ -	£ -	£ -	£ -	£ -	£ -
Events		£ 420.00	£ -	£ -	£ -	£ -	£ -	£ 300.00	£ 186.74	£ -	£ -
Coppicing		£ 500.00	£ 160.00	£ -	£ -	£ -	£ -	£ 300.00	£ 407.00	£ -	£ -
Law Field		£ 1,000.00	£ -	£ -	£ -	£ -	£ -	£ -	£ -	£ -	£ -
Site Surveys		£ 300.00	£ -	£ -	£ -	£ -	£ -	£ 500.00	£ 557.00	£ -	£ -
Equipment		£ -	£ 82.30	£ -	£ 82.30	£ -	£ -	£ -	£ -	£ -	£ -
<b>ENVIRONMENT</b>											
New Projects	Graffiti Boards/Cycle Hangar	£ 7,000.00	£ 7,664.00	£ -	£ 7,664.00	£ 1,775.00	£ 8,775.00	£ -	£ -	£ -	£ -
Hanging Baskets	Supply/Install/Watering	£ 15,000.00	£ 10,347.00	£ 5,000.00	£ 15,347.00	£ 7,000.00	£ 6,561.98	£ -	£ -	£ -	£ -
Transport	Active Travel	£ -	£ 1,500.00	£ -	£ 1,500.00	£ 2,000.00	£ 2,000.00	£ 6,000.00	£ -	£ 7,000.00	£ 1,350.00
<b>ALLOTMENTS</b>											
Allotment Maintenance	General Maintenance	£ 1,500.00	£ 377.84	£ 3,067.37	£ 3,445.21	£ 4,000.00	£ 4,000.00	£ -	£ -	£ -	£ -
<b>REDUNDANT BUDGET LINES</b>											
Grazing & Management								£ 700.00	£ 271.00		
Tree Guards								£ 800.00	£ 150.00		
Ponds								£ 800.00	£ -		
Marketing								£ 100.00	£ 73.20		
Young People/Youth						£ 4,500.00	£ 4,500.00	£ 5,000.00	£ 4,767.61	£ 3,200.00	£ -
Buildings & Tech						£ 5,000.00	£ 5,000.00	£ 7,000.00	£ 1,284.00	£ 3,000.00	£ 120.00
Cross Cutting						£ 2,500.00	£ 2,740.00	£ 2,000.00	£ 1,294.63	£ 2,000.00	£ 150.02
	<b>TOTAL</b>	<b>£ 29,270.00</b>	<b>£ 20,887.73</b>	<b>£ 8,067.37</b>	<b>£ 28,955.10</b>	<b>£ 33,275.00</b>	<b>£ 40,076.98</b>	<b>£ 25,200.00</b>	<b>£ 10,540.16</b>	<b>£ 20,800.00</b>	<b>£ 13,443.25</b>
	<b>BUDGET</b>				<b>£ 29,270.00</b>		<b>£ 33,275.00</b>		<b>£ 25,200.00</b>		<b>£ 20,800.00</b>
<b>INCOME</b>											
Scything Course			£ 240.00		£ 240.00		£ 240.00				
Hanging Baskets			£ 6,985.00		£ 6,985.00						
Grant											£ 7,200.00
	<b>Available Funds</b>				<b>£ 7,539.90</b>		<b>-£ 6,561.98</b>		<b>£ 14,659.84</b>		<b>£ 14,556.75</b>

18

## Survey on Proposed Onshore Wind Farm, Calderdale Energy Park, Development

### Introduction:

Thank you for participating in this survey. Hebden Royd Town Council are seeking opinions from residents on the topic of local developments. The survey should take approximately 5-10 minutes to complete.

For all answers, please place a tick next to each chosen option or write in your answer to any open questions.

### About you

We'd like to ask some general questions about you. It is vital that we ensure a representative spread of demographics within the survey, but we can assure you all data is kept strictly anonymous and aggregated together.

#### 1. Which age band do you fall into?

<input type="radio"/>	Under 16	
<input type="radio"/>	16-34	
<input type="radio"/>	35-54	
<input type="radio"/>	55+	
<input type="radio"/>	Prefer not to answer	

#### 2. Which area do you currently live in?

1. Blackshaw Head	
2. Colden	
3. Haworth	
4. Hebden Bridge town/centre	
5. Heptonstall	
6. Lumbutts	
7. Mytholmroyd	
8. Old Town	
9. Pecket Well	
10. Todmorden	
11. Midgehole	
12. Surrounding areas (Halifax, Sowerby etc)	
13. Outside the surrounding areas	

#### 3. What is your post code? (this information is asked to ensure we achieve a spread of responses from all local areas)

---

4. How long have you lived in the area?

<input type="radio"/>	Less than 1 year	
<input type="radio"/>	1-5 years	
<input type="radio"/>	6-10 years	
<input type="radio"/>	More than 10 years	

5. Which forms of energy do you think the UK can benefit from? (select all that apply)

<input type="radio"/>	Coal	
<input type="radio"/>	Gas	
<input type="radio"/>	Nuclear	
<input type="radio"/>	Solar	
<input type="radio"/>	Wind	
<input type="radio"/>	Tidal & Wave	
<input type="radio"/>	Not sure	
<input type="radio"/>	Other (please write in)	

6. Which of these do you understand to be renewable energies? (select all that apply)

<input type="radio"/>	Coal	
<input type="radio"/>	Gas	
<input type="radio"/>	Nuclear	
<input type="radio"/>	Solar	
<input type="radio"/>	Wind	
<input type="radio"/>	Tidal & Wave	

7. How important is renewable energy for you?

<input type="radio"/>	Very important	
<input type="radio"/>	Somewhat important	
<input type="radio"/>	Neither/nor	
<input type="radio"/>	Somewhat unimportant	
<input type="radio"/>	Totally unimportant	

8. How familiar are you with wind energy and its benefits?

<input type="radio"/>	Very familiar	
<input type="radio"/>	Somewhat familiar	
<input type="radio"/>	Not very familiar	
<input type="radio"/>	Not at all familiar	

If Q8/not at all familiar go to Q13

In general, are you aware of the following types of wind energy? (select all that apply)

<input type="radio"/>	Yes – offshore wind	
-----------------------	---------------------	--

<input type="radio"/>	Yes – onshore	
<input type="radio"/>	No	

9. In general, do you support the use of offshore wind energy?

a.	Strongly support	
b.	Somewhat support	
c.	Neutral	
d.	Somewhat oppose	
e.	Strongly oppose	
f.	Don't know what offshore wind energy is	

ASK Q10 if Q9/codes a-e

10. Why do you say that?

11. In general, do you support the use of onshore wind energy?

a.	Strongly support	
b.	Somewhat support	
c.	Neutral	
d.	Somewhat oppose	
e.	Strongly oppose	
f.	Don't know what onshore wind energy is	

ASK Q12 if Q11/codes a-e

12. Why do you say that?

13. Would you understand any of the following to be benefits of wind energy (Select all that apply)

a.	Renewable energy source	
b.	Reduction in carbon emissions	
c.	Job creation	
d.	Energy independence	
e.	Lower electricity costs	
f.	None of these	
g.	Other (please write in)	

14. What concerns, if any, do you have about wind energy? (Select all that apply)

a.	Visual impact on the landscape	
b.	Noise pollution	
c.	Impact on wildlife	
d.	Health concerns	
e.	Property value decrease	
f.	None of these	
g.	Other (please write in)	

15. Are you aware of a proposed onshore windfarm development, Calderdale Energy Park, on Wadsworth/Walshaw above Hebden Bridge, before taking part in this survey?

a.	Yes	
b.	No	

**Answer Q16-18 only if said 'yes at Q15**

16. What level of knowledge about the proposed windfarm, Calderdale Energy Park, do you have ?

a.	I know a lot	
b.	I know a little	
c.	I only know it by name/it has been proposed	

17. Do you feel that there was sufficient information provided during the non-statutory consultation period to enable an informed decision to be made on the proposed windfarm, Calderdale Energy Park?

a.	Yes	
b.	Unsure	
c.	No	

18. What is your current opinion of the proposed windfarm, Calderdale Energy Park development?

a.	Totally against it	
b.	Somewhat against it	
c.	Neither/Nor	
d.	Somewhat for it	
e.	Totally for it	

19. Why do you say that? Please be as detailed as possible

---

**Thank you for your time and input!**

**DOES HRTC NEED THE BELOW SECTION?**

END 1. Would you like to receive a copy of the results of this survey?

a.	Yes	
b.	No	

END 2. Would you like to be kept up to date with future information about the proposed windfarm, Calderdale Energy Park, development?

c.	Yes	
d.	No	

***Answer next question only if said yes to either END1 or END2 above***

Please provide your details here. NB. Your details would be stored securely within the UK by Hebden Royd Town Council in line with their privacy policy and GDPR.

e.	First name	
f.	Surname	
g.	Mobile	
h.	Email	
i.	Postal address	

Please return this completed survey to [insert details here of how people should return it]



## **Meadows Day 2025 Report**

Number of attendees

AM Ecology Walk - 9 attendees

PM Ecology Walk - 11 attendees

Local History Walk - 12 bookings + 5 walk ins

Number of attendees overall (excluding Friends) – 42

Number of Forest School Attendees: 12 including children and adults.

Of the 25 people who viewed the Survey Monkey from the ticket booking, 7 responded.

All 10 respondents rated the pre-registration process and site facilities as good.

All 10 respondents said they learnt new skills, enjoyed the event and that they will be very likely to return.

Below is some of the feedback regarding the walks:

'Visitors were warmly welcomed and I felt our presence was valued. I was very impressed by the high standard of research and the interesting presentation of the talk.'

'Really enjoyed the session, Steve was very informative and interesting. Lovely to see the site developing'

'The local history walk was very informative and interesting.'

'Fascinating talks - thank you very much. They helped to broaden my understanding and have made me appreciate my local area even more. I am grateful for everyone's skills and expertise, and I was made to feel welcome.'

'I only managed to take part in the morning Ecology Walk; it was excellent! I had heard how good Steve, the leader, was but he surpassed all my expectations. It was a delight to listen to someone so passionate and knowledgeable.'

'Steve was very knowledgeable about the wildflowers. Thank you to Neil for inviting me to the event, everyone was friendly and welcoming. Really enjoyed the history talk too.'

'Due to time constraints we only managed the morning ecology walk, which was brilliant, what a mine of information the leader was could've listened to him all day!'

'Knowledgeable but personable walk guide. Learnt a lot. Great site.'

## **Request to HRTC to explore options and funding to line and insulate the Shipping Container at High Hirst Allotments**

### **The Situation**

Having access to the Shipping Container for storing equipment and tools has proved a real boon for volunteers engaged with restoring the Woodmeadow and working in Law Field too. It has proved its worth both for when they are in use during work parties etc (and especially so at the busiest times of year, like Hay Time) and also for periods in between times when they are not being used and need storing.

After last year's haymaking in the summer of 2024, the scythes and wooden hay rakes, that we'd purchased with a help of a grant from the Friends of Calderdale Countryside (FOCC), were cleaned and put away. Unfortunately, after a break when I returned in late autumn, I was alarmed to find that not only had the scythe blades all rusted but the wooden handles of both scythe and hay rakes were covered with a greenish mildew, or some sort of fungus. I took them away to clean up and coat the handles with linseed oil.

It was very clear too that, because it is so cold and damp in the Container during the winter months as it is unlined (and even has some holes in the exterior walls), the Container would not be suitable for storing such equipment. Emma Green kindly allowed us to store our Hay Time equipment over winter in the Town Hall's store cupboard at the top of the building. Though warmer, this is not suitable however as a long term solution since (a) it is already very full, and (b) there are obviously H&S issues with staff accessing the cupboard for files etc, where scythes are stored away there too (albeit, I'd hoped, very safely right at the back of the room).

With agreement secured from the Council for funds in the 2025-26 budget to buy a couple of power tools – a brushcutter and a power scythe - the question of where we could store them too over winter then became paramount. The obvious and most practical solution is still the Shipping Container but we were by now aware this is not really suitable.

In addition, the Friends of High Hirst Woodmeadow (FOHHWM, or the 'Friends') have begun to acquire more tools for their now regular weekly and monthly work parties.

There is also the additional issue of security to be taken into account, as the Allotment holders also have access to the Container, and there has unfortunately been a tendency for it to be left open in the past too. It is clear that not all these tools can be stored in the lockable cabinet (which is now almost all taken up with the brushcutter and its batteries and charger etc) so security becomes an issue too.

After discussion with members of Friends and our expert National Trust adviser, Steve Hindle, the solution of lining the container was hit upon.

## **The proposal**

Working with the Friends, we'd like to request that HRTC explore options for lining the Container to make it more suitable and secure for our mutual use.

We could either:

- (i) Line the whole of the inside of the container, keeping the current layout and security arrangements pretty much as now; or
- (ii) Maybe only line a third to one half of it, at the back of the container, for Friends & HRTC use, allowing Allotment holders access still to the front half/two thirds.

### **Option 1: Line the whole container**

This is probably the easier of the two options, certainly more straightforward. We could either pay a contractor to do this or, if that proved too expensive, attempt the job ourselves (see Option3 below).

However there would then still remain the same security and access issues we have today.

### **Option 2: Line one third/half of it, and have a lockable door for access to exclusive Friends & HRTC use within.**

This may in fact work out the less expensive of the two as we would have less to line, but produces a better solution, long term, in that Allotment holders and Friends/HRTC tools and equipment will be kept separate.

*Whichever of these options is chosen, it should be noted that we would still need a closed front with a uPVC door or similar to prevent cold, damp air getting in. As it should be cheaper to line a smaller area, another door would then be needed to separate the lined from the unlined part.*

### **Option 3: Attempt the lining ourselves**

As well as getting the quotes as above, we could also explore what abilities we have within our contacts to design and build it. For example, as well as insulation boards, Steve Hindle has also offered some internal tanking rolls which might be appropriate. He also advises that picking up a second hand uPVC door with frame is fairly cheap and easy.

CROWS could also be approached for help. Many of their members have a wide range of practical skills and might be prepared to help (especially as they have one third share in the brush cutter which is currently stored in the Container). If a few such volunteers along with a few of our own, could be found who were up for helping out we should, in Steve's opinion, be able to do a decent job for very little.

### **Timescale**

Ideally this work needs to be done before the next winter, as we will have the new brush cutter in store, and Friends are currently acquiring new tools that will need to be stored there too.

### **Where do we go from here**

Subject to HRTC's conditional acceptance, we would work together to get a few quotes from reliable contractors who could undertake the job for us. We might also ask them to advise on which of the two options might be better. Either our Coordinator, Gareth Muir, could be asked to explore the options on our behalf, or Friends could form a small team to work together with him to explore options and meet contractors on site perhaps.

Neil Diment

Chair, Friends of High Hirst Woodmeadow

1<sup>st</sup> July 2025

11.a

**To Members of the Local Environment and Allotment Committee**

---

**1. Terms of Reference**

- 1.1 Purpose of the report is to consider the removal of trees at Banksfield Allotment, Mytholmroyd.
- 

**2. Recommendation**

- 2.1 The officer recommends the removal of trees and shrubs on plots 3, 4, 5, 6.
- 2.2 Application of Eco Plugs to the resultant stumps to kill the remaining root systems.
- 

**3. Background**

- 3.1 The trees on site have not been adequately managed and as such cast shadow over the site, take up ground water and nutrients negatively impacting on Tenant's ability to cultivate the site.
- 3.2 Trees have been planted on the site since HRTC acquired the site from CMBC (2011) said trees are inappropriate species; not being soft fruit bearing, for example, cherry laurel. This is in contravention to a covenant from CMBC as the site to be used as an allotment. HRTC has an obligation as a Tenant of CMBC to ensure that the site is in good order and there is no non-timber trees planted on site.
- 3.3 On Wednesday 12th June Gareth Muir met with Simon Bell Tree Services to quote for the works.
- 

**4. Information**

- 4.1 Costs/timeline/next steps/considerations/relevant legislation
- 4.2 Costs for 3 days tree works are £750.00 ex Vat per day with a team of 3 working a 6–7-hour day. This includes cutting and the extraction of resultant materials.
- 4.3 These works would be undertaken in the winter period to minimise the impact on site tenant's growing.
- 4.4 Consultation with Tenants regarding the plans would be beneficial to explain the rationale for the works.
- 4.5 The trees on Bankfields Allotments fall within the Mytholmroyd Conservation Area and as such CMBC would require six weeks' notice before the works were to take place along with a plan with location of the trees to be felled and a statement regarding the nature of the works.
- 4.6 Use of Eco Plugs would kill the remaining tree root system as stump grinding is not a viable option. Approx. 200x Eco Plugs would need to be applied at a cost of £157.20 and can be applied by Gareth Muir.

11.b



The Town Hall, St George's Street  
Hebden Bridge, HX7 7BY  
T: 01422 842181  
[Info@hebdenroydtowncouncil.gov.uk](mailto:Info@hebdenroydtowncouncil.gov.uk)  
[www.hebdenroydtowncouncil.gov.uk](http://www.hebdenroydtowncouncil.gov.uk)

## Tenancy Agreement

Between

**HEBDEN ROYD TOWN COUNCIL**

And

**[NAME]**

Date

(Proposed changes in RED)

An agreement made on **[DATE]** Between **HEBDEN ROYD TOWN COUNCIL** (hereinafter called "the Council") of the one part and **[NAME(S)]** (hereinafter called "the Tenant") of the other part.

### WHEREBY IT IS AGREED: -

- i) The Council agrees to let and the Tenant agrees to hire as a yearly tenant from the 1st day of April annually, the Allotment Garden Plot Number **[NUMBER]** situated at **[SITE]**, recorded in the Council's Register of Allotments, for the sum of £50 paid annually in advance on the 1st day of April each year or a proportionate rent thereof dependent upon the commencement of tenancy. Water Services charges will be invoiced separately upon agreement of use.
- ii) The rent payable as above may be increased by the Council by giving the Tenant not less than 12 months' written notice to that effect.

The Tenant agrees with the Council: -

- iii) To pay all rates, taxes, assessments and other outgoings.
- iv) To abide by the allotment rules as set out below.

### **1. Husbandry and maintenance**

- a. The Tenant shall cultivate the land only or mainly to produce vegetables, flowers and fruit crops for consumption or use by the tenant or his/her family and not to cultivate bushes or trees other than those bearing soft fruit. Grass areas are permitted but may only form pathways, small seating, or fruited areas. Grass to be maintained to a height less than 10cm throughout the growing season. An area no greater than 25% of the allotment plot may be used for leisure gardening purposes such as growing flowers, creating, and maintaining a

bio-diversity habitat. A small seating area may also be incorporated into this area for use by the tenant.

- b. The Tenant shall keep the land free from weeds, well-manured and otherwise maintained in a proper state of cultivation and fertility and in good condition and any pathway included therein or abutting thereon shall be kept reasonably free from weeds and rubbish (not including compost material stacked in an orderly fashion as a compost heap or heaps) to the satisfaction of the Council.
- c. Allotments will be inspected twice annually by an officer of the Council.
- d. Where plots are deemed un-worked, a Non-Cultivation Notice will be issued. For the Allotment Tenancy Agreement, cultivation is defined as the plot being dug over ready for planting with seasonal crop production evident. A weed suppressant membrane or strimming is not considered a substitute for cultivation. A new tenant shall be expected to progressively clear one third of the plot within 3 months, with the entire plot being cultivated within one year from the commencement of the tenancy. Failure to comply will result in termination of the tenancy.
- e. No timber or other trees upon the allotment shall be cut or pruned and no minerals, gravel, sand, earth, or clay shall be taken or carried away without the consent of the Council.
- f. The Tenant shall as regard the allotment gardens, observe and perform all covenants and conditions contained in the Lease (if any) under which the Council holds the land.  
The use of artificial fertilizers and pesticides should be kept to a minimum.
- g. The Tenant shall not utilise carpets, underlay or tyres on the Allotment Garden.
- h. The Tenant will endeavour to maintain the plot number provided by the Council in good order and ensure it is always visible

## **2. Assignment / underletting**

- a. Without the written consent of the Council the Tenant shall not assign underlet or part with possession of the allotment garden or any part of it.

## **3. Animals**

- a. The Tenant shall not use the allotment garden for the keeping of any livestock.
- b. The tenant shall ensure that dogs brought onto the Allotment Garden (but not kept at it) shall be always kept on a lead. The tenant is responsible for the removal and safe disposal of dog faeces from the Allotment site including the tenant's own plot. No dog faeces should remain at the Allotments and should not be dug into the soil.

## **4. Structures / buildings**

- a. The Tenant shall not erect or place on the land any building, greenhouse or other structure without the permission of the Council being obtained by writing to the Council. If the erection or placing of any building greenhouse or other structure is so sanctioned the Tenant shall keep the same in a proper state of repair to the satisfaction of the Council.
- b. The Tenant shall not use any barbed wire for a fence adjoining any path set up by the Council for the use of the occupiers of the Allotment Garden.

## **5. Conduct**

- a. The Tenant shall cause no nuisance or annoyance to other allotment tenants or neighbours on adjacent land.
- b. The Tenant shall not use the land for the purpose of any business or trade.

The Tenant shall indemnify the Council about any contravention by act or omission of him/herself his/her servant or agent about the provisions of the Environmental Protection Act 1990, The Occupiers Liability Act 1957 or 1984 or any other legislation on issues of health and safety for the time being in force.

- c. The Tenant shall not enter encroach or trespass, or allow to trespass,

upon another tenant's allotment onto any other plot at any time without the express permission of the relevant plot holder or encroach onto any path, road or communal space.

d. Any person who accompanies the Tenant to cultivate or harvest may not at any time enter onto another plot without the express permission of the relevant plot holder. The Tenant is responsible for the actions of children and others entering the Allotment Site with their permission.

e. The Tenant must not remove produce from any other plot, belonging to any other person or the Council without the express permission of the relevant plot holder.

#### **6. Watering**

a. The Tenant shall only use a handheld hosepipe on the Allotments. The use of sprinklers and hose pipes left running overnight or unattended is forbidden.

b. All water butts should be covered to prevent drowning and the risk of waterborne illnesses.

#### **7. Administration**

a. The tenant shall reside within the boundary of Hebden Royd Town Council.

b. The Tenant shall inform the Council of any change of his/her permanent address within seven days of such change.

#### **9. Termination**

THE Council may re-enter and terminate the Tenancy: -

- a. if the Land is required by the Council for any purpose (not being the use of the land for agriculture) for which it was acquired by the Council or has been appropriated under any statutory provision after three months notice in writing to the Tenant except in case of emergency.
- b. on non-payment of rent for twenty-eight days after the same shall have become due (whether formally demanded or not) or if the Tenant breaks or fails to observe any stipulation herein on his/her part contained or dies or becomes bankrupt or compounds his/her creditors.
- c. If a plot remains uncultivated for a three-month period, following issue of a Non-Cultivation Notice, the Council has the right to offer the site to another person on their waiting list who requires an allotment for the purpose intended. In this case the Council will require the tenant to vacate the site within 7 days of notice and remove personal items.
- d. A tenancy may also be terminated if two Non-Cultivation Notices are served in two consecutive years within the tenancy period.
- e. The tenant may appeal against any decision by writing to the Allotment Officer stating the reasons for the appeal and within 7 days of the date of the Notice.

**SIGNED** by: -

And on behalf of Hebden Royd Town Council

**SIGNED** by: - .....



## High Hirst Allotment Site Maintenance Work Plan 2025

Month	Tasks
January	Clean Signage/Turn Compost/Boundary Repairs/Tree pruning/Tree Planting
February	Turn Compost/Clean Signage/ Boundary Repairs/ Tree Planting
March	Tree Planting/Clean Signage/Turn Compost/Boundary Repairs
April	Water On/ Clean Signage/Turn Compost
May	Weave Willow Shelter/ Trim Communal Plot/ Clean Signage/Turn Compost
June	Trim Communal Plot/ Clean Signage/Turn Compost/Weave Willow Shelter
July	Stoned Fruit Pruning/Trim Communal Plot/ Clean Signage/Turn Compost/Painting Fence & Railings
August	Skip Day/Trim Communal Plot/Stoned Fruit Pruning/Footpath Maintenance/Clean Signage/Turn Compost/ Painting Fence & Railings
September	Trim Communal Plot/ Clean Signage/Turn Compost
October	Pond Restoration/Water Off/Clean Signage/Turn Compost
November	Clean Signage/Turn Compost/Boundary Repairs
December	Clean Signage/Turn Compost/Boundary Repairs

### Dates:

- Allotment Workday Saturday 9<sup>th</sup> August 10am to 2pm
- National Allotments Week 11<sup>th</sup> to 17<sup>th</sup> August

1 / 11.e

### **Tools and Equipment**

**Skip hire: £194 Calder Valley Skip Hire**

**Brushcutter hire: £28 + vat & £2 for the blade affixings = £33.60 ESP Hire**

**Loppers: £16.97**

**Pruning Saw: £26.99**

**Bowsaw: £11.99**

**Goggles: £2.99**

**Forestry Helmet: £28.99**

**Shovel: £24.99**

**Mattock: £28.99**

**Sponges: £0.99**

**Detergent: £3.99**

**Marigold Gloves: £2.99**

**Gardening Fork: £23.99**

**Paint brushes: £1.00**

**Total: £400.97**

### Dog Poo Bag Dispenser Locations 02.06.2025

Description	Grid Reference	X	Y	Latitude	Longitude	Postcode	Address (near)	what3words
Valley Road Dog Poo Bag Dispenser	SD 99335 27514	39933 5	42751 4	53.744	- 2.01156	HX7 7BZ	Valley Antiques Centre, Units 1-8, Valley Road, Birchcliffe, Hebden Royd, Hebden Bridge, Calderdale, West Yorkshire, England, HX7 7BZ, United Kingdom	copycat. underline.cling
Hebble End Dog Poo Bag Dispenser	SD 98914 27142	39891 4	42714 2	53.74066	-2.01794	HX7 6AJ	Hebble End, Birchcliffe, Hebden Royd, Hebden Bridge, Calderdale, West Yorkshire, England, HX7 6AJ, United Kingdom	maiors.wriggled.cuddled
Calder Holme Park Dog Poo Bag Dispenser	SD 99164 27088	3991 64	4270 88	53.7401 76	- 2.0141 55	HX7 8AA	Holme Street, Birchcliffe, Hebden Royd, Hebden Bridge, Calderdale, West Yorkshire, England, HX7 8AA, United Kingdom	readily.pasta.shipper s
Neale Street/Fairfield Dog Poo Bag Dispenser	SD 99353 26842	39935 3	42684 2	53.73797	- 2.01128	HX7 6HR	Birchcliffe, Hebden Royd, Hebden Bridge, Calderdale, West Yorkshire, England, HX7 6HR, United Kingdom	following. daydream.posts
Scout Road, Mytholmroyd	SE 01519 25691	40151 9	42569 1	53.72761 7	- 1.97846	HX7 5JL	Mytholmroyd Methodists C.C. (disused), Scout Road, Banksfield, Hebden Royd, Mytholmroyd, Calderdale, West Yorkshire, England, HX7 5JL, United Kingdom	conveying.inhaled.durations
White Lee Recreation Ground, Mytholmroyd	SE 01481 26172	40148 1	42617 2	53.73194	-1.97902	HX7 5LR	Walkley Clogs, Midgley Road, Banksfield, Hebden Royd, Hebden Bridge, Calderdale, West Yorkshire, England, HX7 5LR, United Kingdom	breath.paddle.awoke

12.a

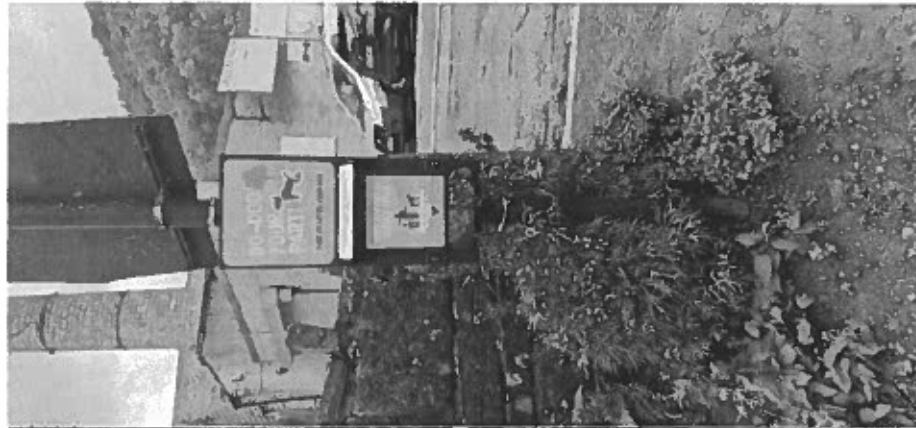




Neate Street



Catder Holmes Park



Hebble End Dispenser

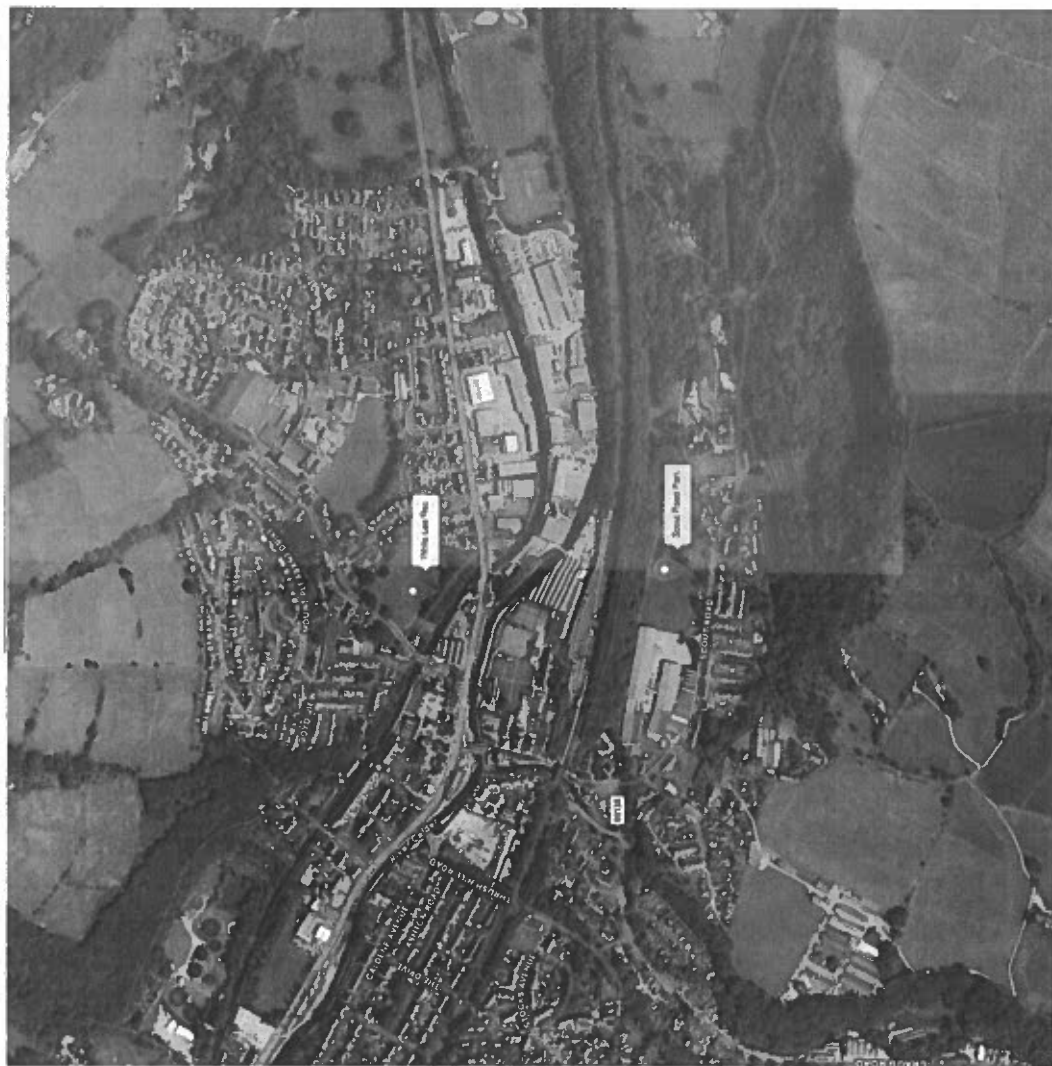


Figure 1 Dog Poo Dispenser Locations Mytholmroyd 17.07.2025



Scout Road Park



White Lee Rec



Valley Road

**Dog Poo Bag Dispenser Maintenance and Checks Log**

Date	Location	Action
15.07.2025	Valley Road	Tightened brackets and removed excess bags as it prevented dispensing.
15.07.2025	Hebble End	Changed Hex Screws to 16mm from 10mm removed excess bags as it prevented dispensing.
15.07.2025	Calder Holmes Park	None taken.
15.07.2025	Neale Street	Changed 10mm Hex screw to flat head screw.
16.07.2025	Scout Road	Excess Bracket strap to be removed.
16.07.2025	White Lee Rec	Dispenser empty; to be filled.